





# Indooroopilly State School

## Multi-level learning facility

Indooroopilly State School draws its students from 42 suburbs. The school believes in providing students with a stimulating, challenging and supportive environment, to foster high quality education and personal development.

Indooroopilly State School have new learning areas, enabling them to increase the number of enrolments and provide more of the local community with the opportunity to stay in the area for their education.

-  Indooroopilly, Queensland
-  \$9M
-  Dec 2018 – Feb 2020
-  Construction

### Project scope

The new learning facility comprised 16 classrooms, amenities and staff facilities.

The new building was constructed on a sloping site, stepping down the hill with the form of the land.

The project team worked collaboratively with key stakeholders to ensure their educational program was maintained during delivery and their values were supported and respected.

### Safety first

The project was nominated in the Australian Construction Awards (ACA) for the Health and Safety Solution of the Year Award. This award celebrates outstanding contribution to improve Health and Safety in the industry, either through a specific product or through process adaptation.

An innovative automated gate was implemented to detect vehicles and trigger flashing lights, letting pedestrians know the roadway was being used. This helped to prevent any interaction between the vehicles, staff and students. This solution was the first of its kind to be applied in a school setting.

Bespoke instructional graphics, designed specifically for children, were positioned to aid the success of the gate system. Wiley engaged with the students in school assemblies, educating them on how to be safety conscious around the construction site and the dangers associated with the cross over points.

### Partners and consultants

Atlas Group | Ko and Co Architecture

### Project reference

Reference: Wendy Fender, Deputy Principal



Tight timeframe



Safety education

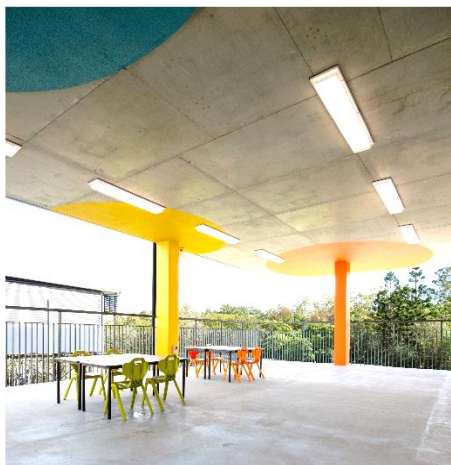


Restricted access



Community engagement





## Client reference



### INDOOROOPILLY STATE SCHOOL

Cnr Moggill Rd and Russell Tce INDOOROOPILLY 4068  
Ph: 07 3327 2333 E: [admin@indooroopillyss.eq.edu.au](mailto:admin@indooroopillyss.eq.edu.au)

14 May 2020

To Whom It May Concern,

Wiley have recently completed the construction of a large, four storey building for Indooroopilly State School. Working on a complex and challenging site, they have delivered a wonderful new learning precinct of which we are all immensely proud.

From the earliest planning stages through to handover, the Wiley team have demonstrated a clear understanding of the needs and responsibilities associated with working in a school environment. Their safety provisions and communication with students, staff and the community have been exemplary.

By employing a proactive planning approach, the Wiley team dealt with potential challenges to ensure school disruptions were kept to a minimum. They willingly negotiated timelines and other factors to accommodate school events, and collaborated with school administration to identify solutions to any minor issues that arose.

The Wiley team welcomed and engaged with our students' curiosity. Through each stage of the build, they demonstrated steadfast client focus and determination to achieve the best possible outcomes for each of our students.

For the past 18 months, we have enjoyed having the Wiley team as an extension of our school community and we are delighted with what we have achieved together.

Sincerely,

Wendy Fender  
Deputy Principal  
[wfender@eq.edu.au](mailto:wfender@eq.edu.au)

